



**Matthew G. Bevin**  
Governor

**COMMONWEALTH OF KENTUCKY**  
**TRANSPORTATION CABINET**  
Frankfort, Kentucky 40622  
[www.transportation.ky.gov/](http://www.transportation.ky.gov/)

**Greg Thomas**  
Secretary

September 9, 2019

CALL NO. 105  
CONTRACT ID NO. 191238  
ADDENDUM # 1

**Subject:** TAYLOR COUNTY, NHPP 6000 (143)  
Letting September 20, 2019

- (1) Revised - Proposal Bid Items - Pages 97-103 of 103
- (2) Revised - Plan Sheet - S23

Proposal revisions are available at <http://transportation.ky.gov/Construction-Procurement/>.

If you have any questions, please contact us at 502-564-3500.

Sincerely,

A handwritten signature in cursive script that reads "Rachel Mills".

Rachel Mills, P.E.  
Director  
Division of Construction Procurement

RM:mr  
Enclosures



An Equal Opportunity Employer M/F/D

**PROPOSAL BID ITEMS**

Report Date 9/9/19

**Section: 0001 - PAVING - ASPHALT ALTERNATE**

LINE	BID CODE	ALT	DESCRIPTION	QUANTITY	UNIT	UNIT PRIC	FP	AMOUNT
0010	00003		CRUSHED STONE BASE	57,786.00	TON		\$	
0020	00013		LIME STABILIZED ROADBED	105,619.00	SQYD		\$	
0030	00014		LIME	1,872.00	TON		\$	
0040	00020		TRAFFIC BOUND BASE	303.00	TON		\$	
0050	00100		ASPHALT SEAL AGGREGATE	425.00	TON		\$	
0060	00103		ASPHALT SEAL COAT	51.00	TON		\$	
0070	00190		LEVELING & WEDGING PG64-22	847.00	TON		\$	
0080	00212		CL2 ASPH BASE 1.00D PG64-22	3,702.00	TON		\$	
0090	00214		CL3 ASPH BASE 1.00D PG64-22	29,989.00	TON		\$	
0100	00301		CL2 ASPH SURF 0.38D PG64-22	1,233.00	TON		\$	
0110	00358		ASPHALT CURING SEAL	106.00	TON		\$	
0120	00388		CL3 ASPH SURF 0.38B PG64-22	8,046.00	TON		\$	
0130	02101		CEM CONC ENT PAVEMENT-8 IN	308.00	SQYD		\$	
0140	02676		MOBILIZATION FOR MILL & TEXT	1.00	LS		\$	
0150	02677		ASPHALT PAVE MILLING & TEXTURING	38.00	TON		\$	
0160	02702		SAND FOR BLOTTER	264.00	TON		\$	
0170	10203ND		PAVEMENT ADJUSTMENT (ASPHALT)	1.00	LS	\$648,812.5	\$	\$648,812.54
0180	20071EC		JOINT ADHESIVE	32,597.00	LF		\$	
0190	24970EC		ASPHALT MATERIAL FOR TACK NON- TRACKING	47.00	TON		\$	

**Section: 0002 - PAVING - CONCRETE ALTERNATE**

LINE	BID CODE	ALT	DESCRIPTION	QUANTITY	UNIT	UNIT PRIC	FP	AMOUNT
0200	00003		CRUSHED STONE BASE	46,229.00	TON		\$	
0210	00013		LIME STABILIZED ROADBED	105,808.00	SQYD		\$	
0220	00014		LIME	1,875.00	TON		\$	
0230	00020		TRAFFIC BOUND BASE	303.00	TON		\$	
0240	00100		ASPHALT SEAL AGGREGATE	425.00	TON		\$	
0250	00103		ASPHALT SEAL COAT	51.00	TON		\$	
0260	00190		LEVELING & WEDGING PG64-22	790.00	TON		\$	
0270	00212		CL2 ASPH BASE 1.00D PG64-22	3,702.00	TON		\$	
0280	00214		CL3 ASPH BASE 1.00D PG64-22	2,781.00	TON		\$	
0290	00301		CL2 ASPH SURF 0.38D PG64-22	1,233.00	TON		\$	
0300	00358		ASPHALT CURING SEAL	106.00	TON		\$	
0310	00388		CL3 ASPH SURF 0.38B PG64-22	1,317.00	TON		\$	
0320	02081		JPC PAVEMENT-8 IN SHLD	29,505.00	SQYD		\$	
0330	02084		JPC PAVEMENT-8 IN	52,040.00	SQYD		\$	
0340	02101		CEM CONC ENT PAVEMENT-8 IN	308.00	SQYD		\$	
0350	02676		MOBILIZATION FOR MILL & TEXT	1.00	LS		\$	
0360	02677		ASPHALT PAVE MILLING & TEXTURING	38.00	TON		\$	
0370	02702		SAND FOR BLOTTER	265.00	TON		\$	
0380	10203ND		PAVEMENT ADJUSTMENT (CONCRETE)	1.00	LS	\$298,621.2	\$	\$298,621.23
0390	20071EC		JOINT ADHESIVE	8,403.00	LF		\$	

**PROPOSAL BID ITEMS**

Report Date 9/9/19

LINE	BID CODE	ALT	DESCRIPTION	QUANTITY	UNIT	UNIT PRIC	FP	AMOUNT
0400	24970EC		ASPHALT MATERIAL FOR TACK NON-TRACKING	13.00	TON		\$	

**Section: 0003 - ROADWAY - ASPHALT ALTERNATE**

LINE	BID CODE	ALT	DESCRIPTION	QUANTITY	UNIT	UNIT PRIC	FP	AMOUNT
0410	00021		DRAINAGE BLANKET-EMBANKMENT	908.00	CUYD		\$	
0420	00078		CRUSHED AGGREGATE SIZE NO 2	4,690.00	TON		\$	
0430	01891		ISLAND HEADER CURB TYPE 2	92.00	LF		\$	
0440	01987		DELINEATOR FOR GUARDRAIL BI DIRECTIONAL WHITE	146.00	EACH		\$	
0450	01990		DELINEATOR FOR BARRIER WALL-B/W	24.00	EACH		\$	
0460	02014		BARRICADE-TYPE III	31.00	EACH		\$	
0470	02091		REMOVE PAVEMENT	144.00	SQYD		\$	
0480	02159		TEMP DITCH	12,141.00	LF		\$	
0490	02160		CLEAN TEMP DITCH	6,071.00	LF		\$	
0500	02200		ROADWAY EXCAVATION	707,431.00	CUYD		\$	
0510	02223		GRANULAR EMBANKMENT	3,778.00	CUYD		\$	
0520	02242		WATER (FOR DUST CONTROL)	270.00	MGAL		\$	
0530	02262		FENCE-WOVEN WIRE TYPE 1	33,234.00	LF		\$	
0540	02351		GUARDRAIL-STEEL W BEAM-S FACE	10,400.00	LF		\$	
0550	02360		GUARDRAIL TERMINAL SECTION NO 1	9.00	EACH		\$	
0560	02363		GUARDRAIL CONNECTOR TO BRIDGE END TY A	4.00	EACH		\$	
0570	02367		GUARDRAIL END TREATMENT TYPE 1	20.00	EACH		\$	
0580	02371		GUARDRAIL END TREATMENT TYPE 7	1.00	EACH		\$	
0590	02381		REMOVE GUARDRAIL	1,194.00	LF		\$	
0600	02429		RIGHT-OF-WAY MONUMENT TYPE 1	170.00	EACH		\$	
0610	02432		WITNESS POST	27.00	EACH		\$	
0620	02469		CLEAN SINKHOLE	4.00	EACH		\$	
0630	02483		CHANNEL LINING CLASS II	1,559.00	TON		\$	
0640	02488		CHANNEL LINING CLASS IV	5,246.00	CUYD		\$	
0650	02545		CLEARING AND GRUBBING (APPROXIMATELY 134 ACRES)	1.00	LS		\$	
0660	02555		CONCRETE-CLASS B	58.24	CUYD		\$	
0670	02562		TEMPORARY SIGNS	753.00	SQFT		\$	
0680	02585		EDGE KEY	38.00	LF		\$	
0690	02596		FABRIC-GEOTEXTILE TYPE I	10,365.00	SQYD		\$	
0700	02599		FABRIC-GEOTEXTILE TYPE IV	15,211.00	SQYD		\$	
0710	02650		MAINTAIN & CONTROL TRAFFIC	1.00	LS		\$	
0720	02651		DIVERSIONS (BY-PASS DETOURS) (KY 372)	1.00	LS		\$	
0730	02651		DIVERSIONS (BY-PASS DETOURS) (KY 70)	1.00	LS		\$	
0740	02671		PORTABLE CHANGEABLE MESSAGE SIGN	6.00	EACH		\$	
0750	02696		SHOULDER RUMBLE STRIPS	37,453.00	LF		\$	
0760	02701		TEMP SILT FENCE	12,141.00	LF		\$	
0770	02703		SILT TRAP TYPE A	134.00	EACH		\$	
0780	02704		SILT TRAP TYPE B	134.00	EACH		\$	

**PROPOSAL BID ITEMS**

Report Date 9/9/19

LINE	BID CODE	ALT	DESCRIPTION	QUANTITY	UNIT	UNIT PRIC	FP	AMOUNT
0790	02705		SILT TRAP TYPE C	134.00	EACH		\$	
0800	02706		CLEAN SILT TRAP TYPE A	134.00	EACH		\$	
0810	02707		CLEAN SILT TRAP TYPE B	134.00	EACH		\$	
0820	02708		CLEAN SILT TRAP TYPE C	134.00	EACH		\$	
0830	02726		STAKING	1.00	LS		\$	
0840	02775		ARROW PANEL	2.00	EACH		\$	
0850	05950		EROSION CONTROL BLANKET	13,683.00	SQYD		\$	
0860	05952		TEMP MULCH	321,156.00	SQYD		\$	
0870	05953		TEMP SEEDING AND PROTECTION	243,562.00	SQYD		\$	
0880	05963		INITIAL FERTILIZER	24.50	TON		\$	
0890	05964		MAINTENANCE FERTILIZER	24.50	TON		\$	
0900	05985		SEEDING AND PROTECTION	433,791.00	SQYD		\$	
0910	05989		SPECIAL SEEDING CROWN VETCH	43,441.00	SQYD		\$	
0920	05990		SODDING	7,957.00	SQYD		\$	
0930	05992		AGRICULTURAL LIMESTONE	292.30	TON		\$	
0940	06510		PAVE STRIPING-TEMP PAINT-4 IN	37,290.00	LF		\$	
0950	06514		PAVE STRIPING-PERM PAINT-4 IN	25,261.00	LF		\$	
0960	06542		PAVE STRIPING-THERMO-6 IN W	37,381.00	LF		\$	
0970	06543		PAVE STRIPING-THERMO-6 IN Y	19,898.00	LF		\$	
0980	06556		PAVE STRIPING-DUR TY 1-6 IN W	1,166.00	LF		\$	
0990	06557		PAVE STRIPING-DUR TY 1-6 IN Y	146.00	LF		\$	
1000	06568		PAVE MARKING-THERMO STOP BAR-24IN	129.00	LF		\$	
1010	06569		PAVE MARKING-THERMO CROSS-HATCH	6,714.00	SQFT		\$	
1020	06572		PAVE MARKING-DOTTED LANE EXTEN	156.00	LF		\$	
1030	06574		PAVE MARKING-THERMO CURV ARROW	35.00	EACH		\$	
1040	06588		PAVEMENT MARKER TY IVA-BY TEMP	293.00	EACH		\$	
1050	06600		REMOVE PAVEMENT MARKER TYPE V	102.00	EACH		\$	
1060	20191ED		OBJECT MARKER TY 3	20.00	EACH		\$	
1070	20458ES403		CENTERLINE RUMBLE STRIPS	18,067.00	LF		\$	
1080	20550ND		SAWCUT PAVEMENT	4,498.00	LF		\$	
1090	21289ED		LONGITUDINAL EDGE KEY	4,316.00	LF		\$	
1100	21417ES717		PAVE MARK THERMO CONE CAP-SOLID YELLOW	203.00	SQFT		\$	
1110	22664EN		WATER BLASTING EXISTING STRIPE	1,770.00	LF		\$	
1120	22861EN		HIGH STRENGTH GEOTEXTILE FABRIC TY V	8,667.00	SQYD		\$	
1130	23274EN11F		TURF REINFORCEMENT MAT 1	15,916.00	SQYD		\$	
1140	24097EC		THERMO RUMBLE STRIPS TY 2	480.00	LF		\$	
1150	24679ED		PAVE MARK THERMO CHEVRON	6,857.00	SQFT		\$	
1160	24814EC		PIPELINE INSPECTION	2,914.00	LF		\$	
1170	24843EC		VIBRATING WIRE PIEZOMETER	1.00	EACH		\$	

**Section: 0004 - ROADWAY - CONCRETE ALTERNATE**

LINE	BID CODE	ALT	DESCRIPTION	QUANTITY	UNIT	UNIT PRIC	FP	AMOUNT
1180	00021		DRAINAGE BLANKET-EMBANKMENT	908.00	CUYD		\$	
1190	00078		CRUSHED AGGREGATE SIZE NO 2	4,690.00	TON		\$	
1200	01845		ISLAND INTEGRAL CURB	92.00	LF		\$	
1210	01987		DELINEATOR FOR GUARDRAIL BI DIRECTIONAL WHITE	146.00	EACH		\$	

**PROPOSAL BID ITEMS**

Report Date 9/9/19

LINE	BID CODE	ALT	DESCRIPTION	QUANTITY	UNIT	UNIT PRIC	FP	AMOUNT
1220	01990		DELINEATOR FOR BARRIER WALL-B/W	24.00	EACH		\$	
1230	02014		BARRICADE-TYPE III	31.00	EACH		\$	
1240	02091		REMOVE PAVEMENT	144.00	SQYD		\$	
1250	02159		TEMP DITCH	12,141.00	LF		\$	
1260	02160		CLEAN TEMP DITCH	6,071.00	LF		\$	
1270	02200		ROADWAY EXCAVATION	704,537.00	CUYD		\$	
1280	02223		GRANULAR EMBANKMENT	3,778.00	CUYD		\$	
1290	02242		WATER (FOR DUST CONTROL)	270.00	MGAL		\$	
1300	02262		FENCE-WOVEN WIRE TYPE 1	33,234.00	LF		\$	
1310	02351		GUARDRAIL-STEEL W BEAM-S FACE	10,400.00	LF		\$	
1320	02360		GUARDRAIL TERMINAL SECTION NO 1	9.00	EACH		\$	
1330	02363		GUARDRAIL CONNECTOR TO BRIDGE END TY A	4.00	EACH		\$	
1340	02367		GUARDRAIL END TREATMENT TYPE 1	20.00	EACH		\$	
1350	02371		GUARDRAIL END TREATMENT TYPE 7	1.00	EACH		\$	
1360	02381		REMOVE GUARDRAIL	1,194.00	LF		\$	
1370	02429		RIGHT-OF-WAY MONUMENT TYPE 1	170.00	EACH		\$	
1380	02432		WITNESS POST	27.00	EACH		\$	
1390	02469		CLEAN SINKHOLE	4.00	EACH		\$	
1400	02483		CHANNEL LINING CLASS II	1,559.00	TON		\$	
1410	02488		CHANNEL LINING CLASS IV	5,246.00	CUYD		\$	
1420	02545		CLEARING AND GRUBBING (APPROXIMATELY 134 ACRES)	1.00	LS		\$	
1430	02555		CONCRETE-CLASS B	58.24	CUYD		\$	
1440	02562		TEMPORARY SIGNS	753.00	SQFT		\$	
1450	02585		EDGE KEY	38.00	LF		\$	
1460	02596		FABRIC-GEOTEXTILE TYPE I	10,365.00	SQYD		\$	
1470	02599		FABRIC-GEOTEXTILE TYPE IV	15,211.00	SQYD		\$	
1480	02650		MAINTAIN & CONTROL TRAFFIC	1.00	LS		\$	
1490	02651		DIVERSIONS (BY-PASS DETOURS) (KY 372)	1.00	LS		\$	
1500	02651		DIVERSIONS (BY-PASS DETOURS) (KY 70)	1.00	LS		\$	
1510	02671		PORTABLE CHANGEABLE MESSAGE SIGN	6.00	EACH		\$	
1520	02696		SHOULDER RUMBLE STRIPS	4,168.00	LF		\$	
1530	02701		TEMP SILT FENCE	12,141.00	LF		\$	
1540	02703		SILT TRAP TYPE A	134.00	EACH		\$	
1550	02704		SILT TRAP TYPE B	134.00	EACH		\$	
1560	02705		SILT TRAP TYPE C	134.00	EACH		\$	
1570	02706		CLEAN SILT TRAP TYPE A	134.00	EACH		\$	
1580	02707		CLEAN SILT TRAP TYPE B	134.00	EACH		\$	
1590	02708		CLEAN SILT TRAP TYPE C	134.00	EACH		\$	
1600	02726		STAKING	1.00	LS		\$	
1610	02775		ARROW PANEL	2.00	EACH		\$	
1620	05950		EROSION CONTROL BLANKET	13,683.00	SQYD		\$	
1630	05952		TEMP MULCH	321,156.00	SQYD		\$	
1640	05953		TEMP SEEDING AND PROTECTION	243,562.00	SQYD		\$	
1650	05963		INITIAL FERTILIZER	24.50	TON		\$	
1660	05964		MAINTENANCE FERTILIZER	24.50	TON		\$	
1670	05985		SEEDING AND PROTECTION	433,791.00	SQYD		\$	

**PROPOSAL BID ITEMS**

Report Date 9/9/19

LINE	BID CODE	ALT	DESCRIPTION	QUANTITY	UNIT	UNIT PRIC	FP	AMOUNT
1680	05989		SPECIAL SEEDING CROWN VETCH	43,441.00	SQYD		\$	
1690	05990		SODDING	7,957.00	SQYD		\$	
1700	05992		AGRICULTURAL LIMESTONE	292.30	TON		\$	
1710	06510		PAVE STRIPING-TEMP PAINT-4 IN	37,290.00	LF		\$	
1720	06514		PAVE STRIPING-PERM PAINT-4 IN	25,261.00	LF		\$	
1730	06556		PAVE STRIPING-DUR TY 1-6 IN W	38,547.00	LF		\$	
1740	06557		PAVE STRIPING-DUR TY 1-6 IN Y	20,444.00	LF		\$	
1750	06568		PAVE MARKING-THERMO STOP BAR-24IN	48.00	LF		\$	
1760	06569		PAVE MARKING-THERMO CROSS-HATCH	1,967.00	SQFT		\$	
1770	06572		PAVE MARKING-DOTTED LANE EXTEN	156.00	LF		\$	
1780	06574		PAVE MARKING-THERMO CURV ARROW	10.00	EACH		\$	
1790	06588		PAVEMENT MARKER TY IVA-BY TEMP	293.00	EACH		\$	
1800	06600		REMOVE PAVEMENT MARKER TYPE V	102.00	EACH		\$	
1810	20191ED		OBJECT MARKER TY 3	20.00	EACH		\$	
1820	20458ES403		CENTERLINE RUMBLE STRIPS	1,610.00	LF		\$	
1830	20458ES403		CENTERLINE RUMBLE STRIPS (CONCRETE PAVEMENT)	16,457.00	LF		\$	
1840	20550ND		SAWCUT PAVEMENT	4,498.00	LF		\$	
1850	21289ED		LONGITUDINAL EDGE KEY	4,316.00	LF		\$	
1860	21417ES717		PAVE MARK THERMO CONE CAP-SOLID YELLOW	203.00	SQFT		\$	
1870	22664EN		WATER BLASTING EXISTING STRIPE	1,770.00	LF		\$	
1880	22861EN		HIGH STRENGTH GEOTEXTILE FABRIC TY V	8,667.00	SQYD		\$	
1890	23253ES717		PAVE MARK TY 1 TAPE CROSS HATCH	4,747.00	SQFT		\$	
1900	23265ES717		PAVE MARK TY 1 TAPE STOP BAR-24 IN	81.00	LF		\$	
1910	23270ES717		PAVE MARK TY 1 TAPE-CURV ARROW	25.00	EACH		\$	
1920	23274EN11F		TURF REINFORCEMENT MAT 1	15,916.00	SQYD		\$	
1930	24097EC		THERMO RUMBLE STRIPS TY 2	480.00	LF		\$	
1940	24679ED		PAVE MARK THERMO CHEVRON	6,857.00	SQFT		\$	
1950	24814EC		PIPELINE INSPECTION	2,914.00	LF		\$	
1960	24843EC		VIBRATING WIRE PIEZOMETER	1.00	EACH		\$	

**Section: 0005 - DRAINAGE**

LINE	BID CODE	ALT	DESCRIPTION	QUANTITY	UNIT	UNIT PRIC	FP	AMOUNT
1970	00440		ENTRANCE PIPE-15 IN	845.00	LF		\$	
1980	00441		ENTRANCE PIPE-18 IN	579.00	LF		\$	
1990	00443		ENTRANCE PIPE-24 IN	153.00	LF		\$	
2000	00445		ENTRANCE PIPE-30 IN	116.00	LF		\$	
2010	00450		ENTRANCE PIPE-15 IN EQUIV	198.00	LF		\$	
2020	00451		ENTRANCE PIPE-18 IN EQUIV	57.00	LF		\$	
2030	00452		ENTRANCE PIPE-24 IN EQUIV	139.00	LF		\$	
2040	00461		CULVERT PIPE-15 IN	20.00	LF		\$	
2050	00464		CULVERT PIPE-24 IN	239.00	LF		\$	
2060	00466		CULVERT PIPE-30 IN	85.00	LF		\$	
2070	00468		CULVERT PIPE-36 IN	85.00	LF		\$	
2080	00469		CULVERT PIPE-42 IN	829.00	LF		\$	
2090	00522		STORM SEWER PIPE-18 IN	63.00	LF		\$	
2100	00524		STORM SEWER PIPE-24 IN	59.00	LF		\$	

**PROPOSAL BID ITEMS**

Report Date 9/9/19

LINE	BID CODE	ALT	DESCRIPTION	QUANTITY	UNIT	UNIT PRIC	FP	AMOUNT
2110	00528		STORM SEWER PIPE-36 IN	137.00	LF		\$	
2120	01000		PERFORATED PIPE-4 IN	1,835.00	LF		\$	
2130	01010		NON-PERFORATED PIPE-4 IN	242.00	LF		\$	
2140	01020		PERF PIPE HEADWALL TY 1-4 IN	5.00	EACH		\$	
2150	01024		PERF PIPE HEADWALL TY 2-4 IN	4.00	EACH		\$	
2160	01028		PERF PIPE HEADWALL TY 3-4 IN	8.00	EACH		\$	
2170	01032		PERF PIPE HEADWALL TY 4-4 IN	5.00	EACH		\$	
2180	01202		PIPE CULVERT HEADWALL-15 IN	1.00	EACH		\$	
2190	01208		PIPE CULVERT HEADWALL-24 IN	3.00	EACH		\$	
2200	01212		PIPE CULVERT HEADWALL-36 IN	1.00	EACH		\$	
2210	01214		PIPE CULVERT HEADWALL-42 IN	8.00	EACH		\$	
2220	01451		S & F BOX INLET-OUTLET-24 IN	2.00	EACH		\$	
2230	01452		S & F BOX INLET-OUTLET-30 IN	2.00	EACH		\$	
2240	01480		CURB BOX INLET TYPE B	1.00	EACH		\$	
2250	01645		JUNCTION BOX-36 IN	1.00	EACH		\$	
2260	01661		SPRING BOX INLET TYPE A MOD	2.00	EACH		\$	
2270	02600		FABRIC GEOTEXTILE TY IV FOR PIPE	3,545.00	SQYD	\$2.00	\$	\$7,090.00
2280	08100		CONCRETE-CLASS A	3.64	CUYD		\$	
2290	24575ES610		HEADWALL (CONC SLOPED & MITERED-15 IN)	8.00	EACH		\$	
2300	24575ES610		HEADWALL (CONC SLOPED & MITERED-18 IN)	14.00	EACH		\$	
2310	24575ES610		HEADWALL (CONC SLOPED & MITERED-24 IN)	6.00	EACH		\$	
2320	24575ES610		HEADWALL (CONC SLOPED & MITERED-36 IN)	2.00	EACH		\$	

**Section: 0006 - BRIDGE - STONE QUARRY CREEK - DWG. 27703 (REVISED)**

LINE	BID CODE	ALT	DESCRIPTION	QUANTITY	UNIT	UNIT PRIC	FP	AMOUNT
2330	02231		STRUCTURE GRANULAR BACKFILL	333.60	CUYD		\$	
2340	02599		FABRIC-GEOTEXTILE TYPE IV	816.00	SQYD		\$	
2350	02998		MASONRY COATING	1,239.00	SQYD		\$	
2360	03299		ARMORED EDGE FOR CONCRETE	80.00	LF		\$	
2370	08001		STRUCTURE EXCAVATION-COMMON	380.00	CUYD		\$	
2380	08002		STRUCTURE EXCAV-SOLID ROCK	1,554.00	CUYD		\$	
2390	08020		CRUSHED AGGREGATE SLOPE PROT	705.00	TON		\$	
2400	08033		TEST PILES	23.00	LF		\$	
2410	08046		PILES-STEEL HP12X53	206.00	LF		\$	
2420	08094		PILE POINTS-12 IN	12.00	EACH		\$	
2430	08100		CONCRETE-CLASS A	1,432.50	CUYD		\$	
2440	08104		CONCRETE-CLASS AA	967.00	CUYD		\$	
2450	08150		STEEL REINFORCEMENT	176,755.00	LB		\$	
2460	08151		STEEL REINFORCEMENT-EPOXY COATED	301,080.00	LB		\$	
2470	21532ED		RAIL SYSTEM TYPE III	1,172.30	LF		\$	
2480	22861EN		HIGH STRENGTH GEOTEXTILE FABRIC TY V	2,553.00	SQYD		\$	
2490	23813EC		DECK DRAIN	11.00	EACH		\$	
2500	24595EN		ELASTICIZED EPS (10-IN THICKNESS)	119.00	SQYD		\$	
2510	24596EN		GRANULAR BACKFILL	724.00	CUYD		\$	

**PROPOSAL BID ITEMS**

Report Date 9/9/19

LINE	BID CODE	ALT	DESCRIPTION	QUANTITY	UNIT	UNIT PRIC	FP	AMOUNT
2520	24627ED		PPC I-BEAM BT 96-49	2,328.70	LF		\$	

**Section: 0007 - BRIDGE - CULVERT - 6 X 6 RCBC - DWG. 27704 (ADDED)**

LINE	BID CODE	ALT	DESCRIPTION	QUANTITY	UNIT	UNIT PRIC	FP	AMOUNT
2530	08002		STRUCTURE EXCAV-SOLID ROCK	574.00	CUYD		\$	
2540	08003		FOUNDATION PREPARATION	1.00	LS		\$	
2550	08100		CONCRETE-CLASS A	552.60	CUYD		\$	
2560	08150		STEEL REINFORCEMENT	113,223.00	LB		\$	

**Section: 0008 - BRIDGE - CULVERT - ELKHORN ROAD CREEK - DWG. 27705 (ADDED)**

LINE	BID CODE	ALT	DESCRIPTION	QUANTITY	UNIT	UNIT PRIC	FP	AMOUNT
2570	08002		STRUCTURE EXCAV-SOLID ROCK	13.00	CUYD		\$	
2580	08003		FOUNDATION PREPARATION	1.00	LS		\$	
2590	08100		CONCRETE-CLASS A	655.00	CUYD		\$	
2600	08150		STEEL REINFORCEMENT	103,550.00	LB		\$	

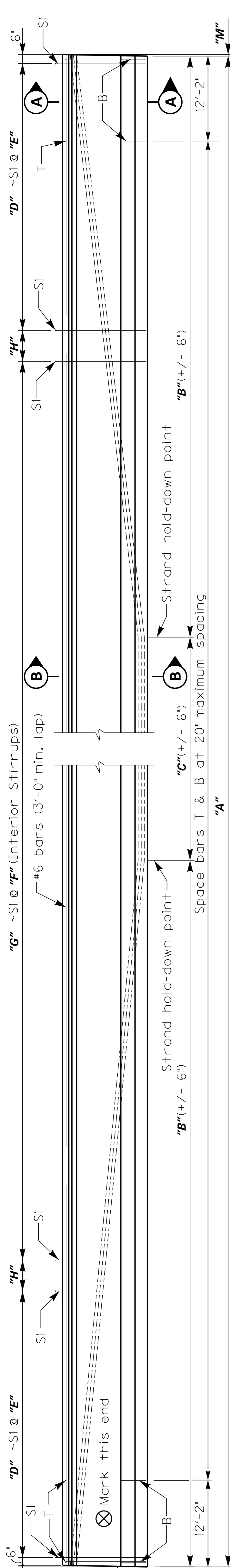
**Section: 0009 - BRIDGE - CULVERT- ROBINSON CREEK - DWG. 27706 (ADDED)**

LINE	BID CODE	ALT	DESCRIPTION	QUANTITY	UNIT	UNIT PRIC	FP	AMOUNT
2610	02403		REMOVE CONCRETE MASONRY	1.00	CUYD		\$	
2620	02625		REMOVE HEADWALL	1.00	EACH		\$	
2630	08002		STRUCTURE EXCAV-SOLID ROCK	16.00	CUYD		\$	
2640	08003		FOUNDATION PREPARATION	1.00	LS		\$	
2650	08100		CONCRETE-CLASS A	59.10	CUYD		\$	
2660	08150		STEEL REINFORCEMENT	5,729.00	LB		\$	

**Section: 0010 - DEMOBILIZATION &/OR MOBILIZATION**

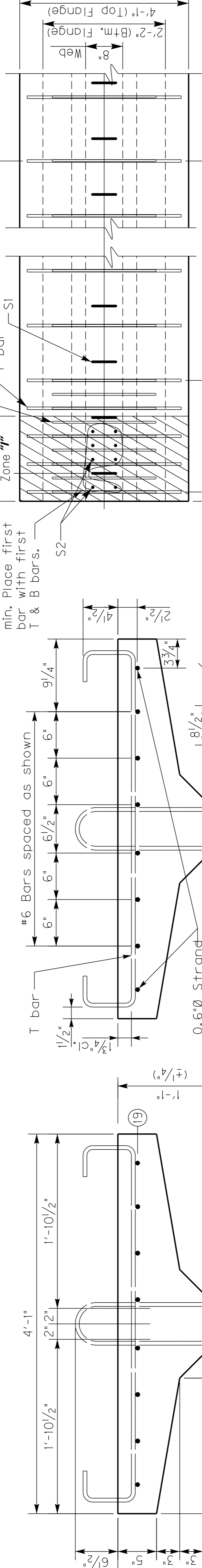
LINE	BID CODE	ALT	DESCRIPTION	QUANTITY	UNIT	UNIT PRIC	FP	AMOUNT
2670	02568		MOBILIZATION	1.00	LS		\$	
2680	02569		DEMOBILIZATION	1.00	LS		\$	





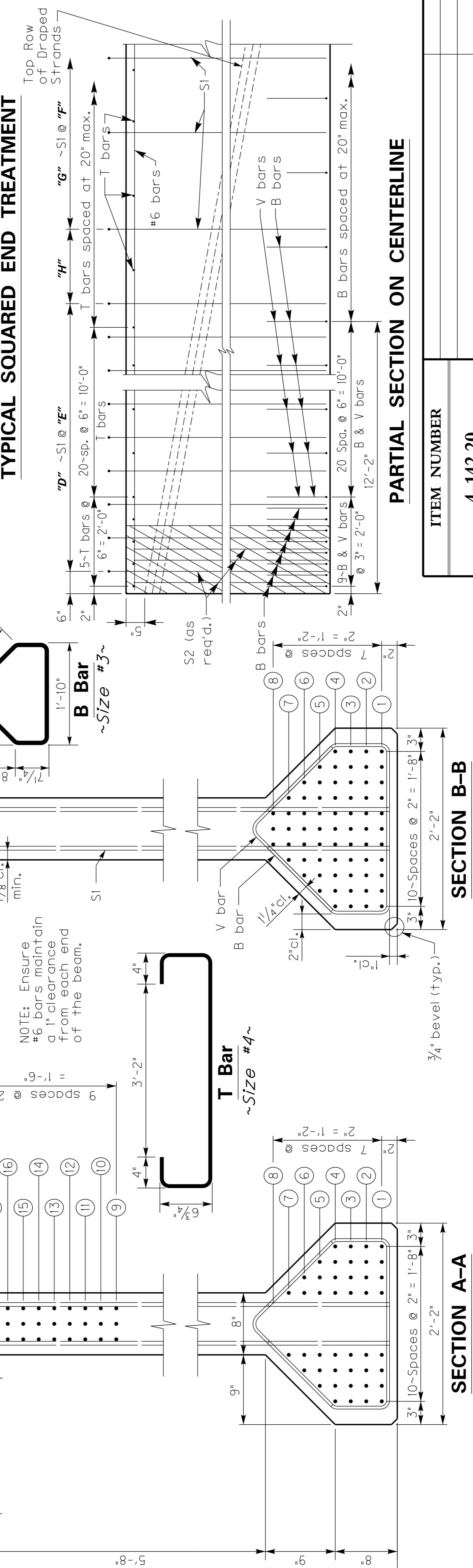
**ELEVATION OF BEAM**

HOLD-DOWN DEVICES: Multiple hold-down devices may be required at each hold-down point to meet allowable capacity of commonly utilized hold-down devices. Locate hold-down devices 3" on both sides of 'Strand hold-down point' indicated above.



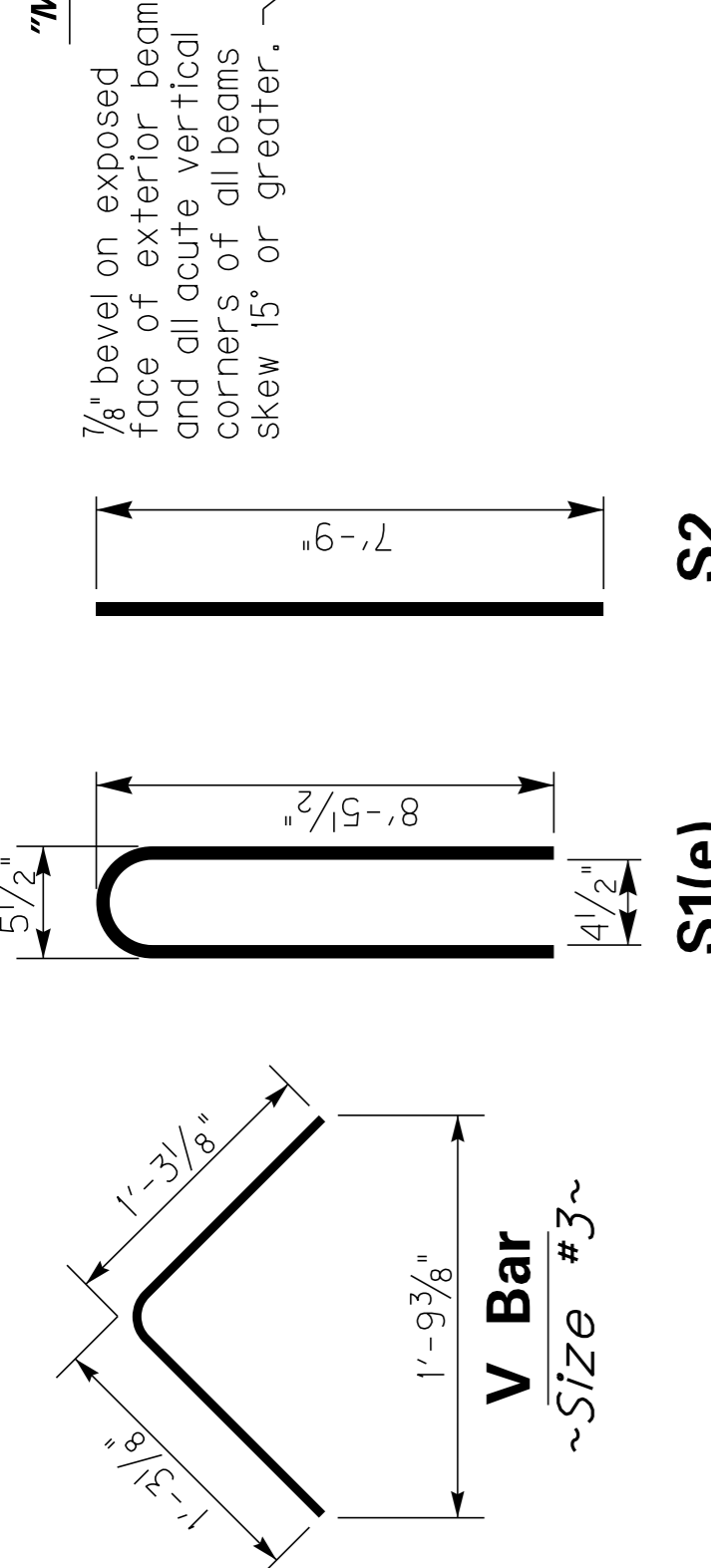
**TYPICAL SQUARED END TREATMENT**

Place S2 bars in anchorage zone as required, spaced at 3" min. Place first T & B bars.



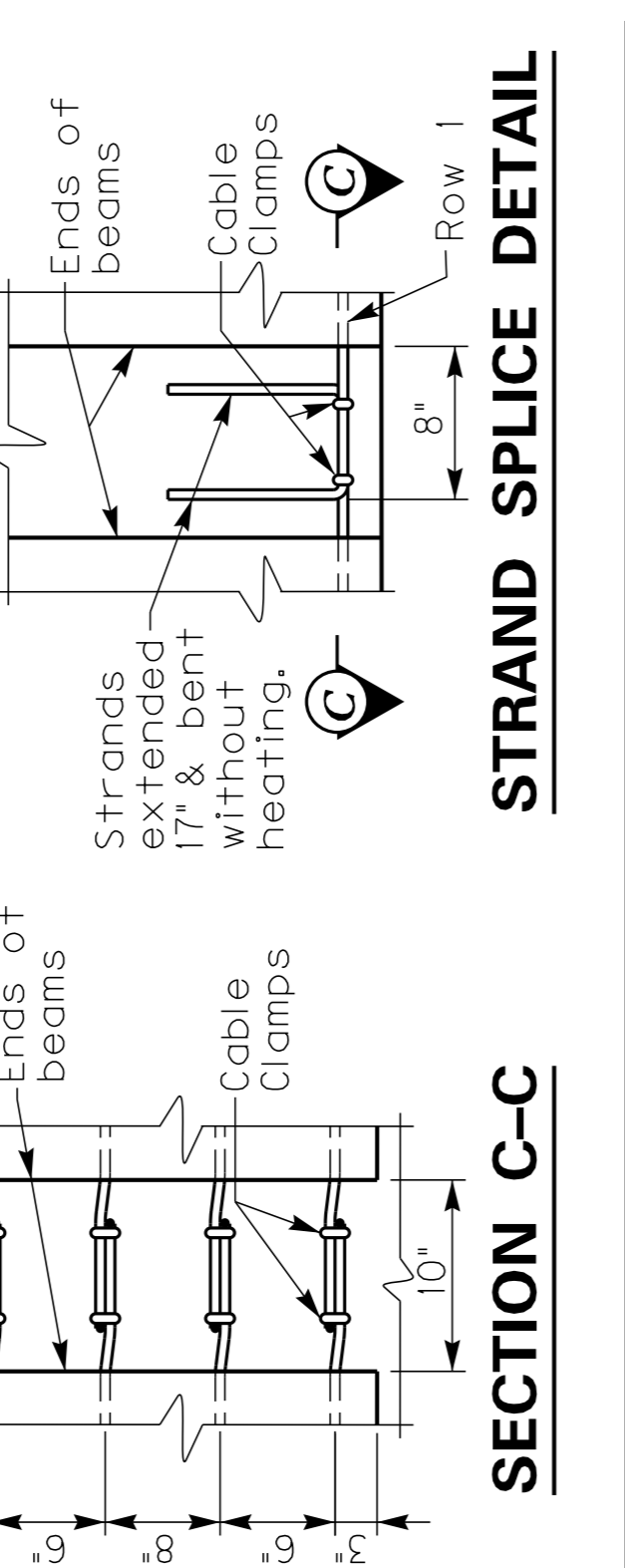
**PARTIAL SECTION ON CENTERLINE**

NOTE: Ensure #6 bars maintain a 1" clearance from each end of the beam.



**STRAND SPLICE DETAIL**

CONCRETE: Ensure prestressed girder concrete is in accordance with these plans and the specifications.



**SECTION C-C**

CONCRETE: Ensure prestressed girder concrete is in accordance with these plans and the specifications.

**PCI Beam General Notes**  
 MATERIALS DESIGN SPECIFICATIONS: For prestressed beams: FY = 60,000 psi F'S = 270,000 psi  
 PRESTRESSING REINFORCEMENT: Ensure that strands are 0.6" (nom. diameter, 0.217 sq. in.), uncoated seven-wire stress relieved, low-relaxation conforming to AASHTO M 203, Grade 270. Billing of the cost for redesign of beam and subsequent plan modifications will be made for any request of alternate strand type or arrangement. The designer of the original plans is responsible for the billing and work.

CONSTRUCTION METHOD: Pretension all beams. Ensure concrete has attained f'ci (shown in the table) in standard test cylinders that are made and cured identically with the beams without bond stresses being transferred to the concrete or releasing the end anchors. Attain f'ci (shown in the table) at or prior to 28 days. Apply an initial force of 43,943 lbs. per low-relaxation strand to develop a stress of 202,500 psi. No beam will be accepted that is honeycombed to the extent that strength of the beam or resistance to deterioration has been affected. An allowance of 0.0005L is made for shortening of beams due to shrinkage and elastic change. Show a detensioning plan by sequential numbering of the strand pattern on the shop plans.

LIFTING DEVICES: Detail lifting devices on the shop plans. Loads are to be distributed equally to each device.

BEARING DEVICES: Include the price for lead plates and/or bearing pads in the bid for precast beams.

FABRICATION: The 'Maximum Allowable Camber' shown on the beam sheet is the amount of camber, measured prior to casting the deck, above which the beam will begin to encroach into the slab. If the measured camber is greater than the 'Maximum Allowable Camber', the contractor will be responsible for any necessary adjustments to assure a minimum slab thickness as shown in the plans. This work will be considered incidental to the completion of the structure and must have the approval of the Engineer.

Mark	Strand Data with number indicated in rows																			Beam Data (measured along centerline)																	
	End (SECTION A-A)																			Concrete Stress (psi)	No. of S Bars	Hold-Down Capacity (lbs.)	Total No.	Dimensions											Approximate Weight	Maximum Allowable Camber	
	Midspan (SECTION B-B)	(1)	(2)	(3)	(4)	(5)	(6)	(7)	(8)	(9)	(10)	(11)	(12)	(13)	(14)	(15)	(16)	(17)	(18)					(19)	A	B	C	D	E	F	G	H	I	M			
B1	11	11	11	5																	6500	8000	161	24	56990	1	150'-8 5/8"	70'-4 3/8"	10'	21	9"	12"	119	10 3/8"	24"	200535	3 5/8"
B2	11	11	11	5																	6500	8000	162	24	56873	1	151'-0 1/8"	70'-6"	10'	21	9"	12"	120	6"	24"	200920	3 5/8"
B3	11	11	11	5																	6500	8000	162	24	56757	1	151'-3 5/8"	70'-7 3/4"	10'	21	9"	12"	120	7 3/4"	24"	201305	3 5/8"
B4	11	11	11	5																	6500	8000	162	24	56640	1	151'-7"	70'-9 1/2"	10'	21	9"	12"	120	9 1/2"	24"	201691	3 5/8"
B5	11	9	9	5																	6500	8000	160	24	54318	2	149'-6 5/8"	69'-9 5/8"	10'	21	9"	12"	118	9 5/8"	24"	198982	3 5/8"
B6	11	9	9	5																	6500	8000	160	24	54205	2	149'-10 1/8"	69'-11"	10'	21	9"	12"	118	11"	24"	193758	3 5/8"
B7	11	9	9	5																	6500	8000	161	24	54093	2	150'-1 5/8"	70'-0 3/4"	10'	21	9"	12"	119	6 3/4"	24"	193753	3 5/8"
B8	11	9	9	5																	6500	8000	161	24	53982	2	150'-5"	70'-2 1/2"	10'	21	9"	12"	119	8 1/2"	24"	200139	3 5/8"
B9	11	6	3	3																	6500	8000	140	20	33321	1	130'-8"	60'-4"	10'	18	9"	12"	104	7"	24"	173857	2 7/8"
B10	11	6	3	3																	6500	8000	140	20	33252	1	130'-11"	60'-5 1/2"	10'	18	9"	12"	104	8 1/2"	24"	174191	2 7/8"
B11	11	6	3	3																	6500	8000	140	20	33183	1	131'-2"	60'-7"	10'	18	9"	12"	104	10"	24"	174525	2 7/8"
B12	11	6	3	3																	6500	8000	140	20	33114	1	131'-5"	60'-8 1/2"	10'	18	9"	12"	104	11 1/2"	24"	174859	2 7/8"

ITEM NUMBER	4-142.20
REVISION	
CHECKED BY	Joseph Van Zee
DESIGNED BY	Carl Van Zee
DETAILED BY	Carl Van Zee

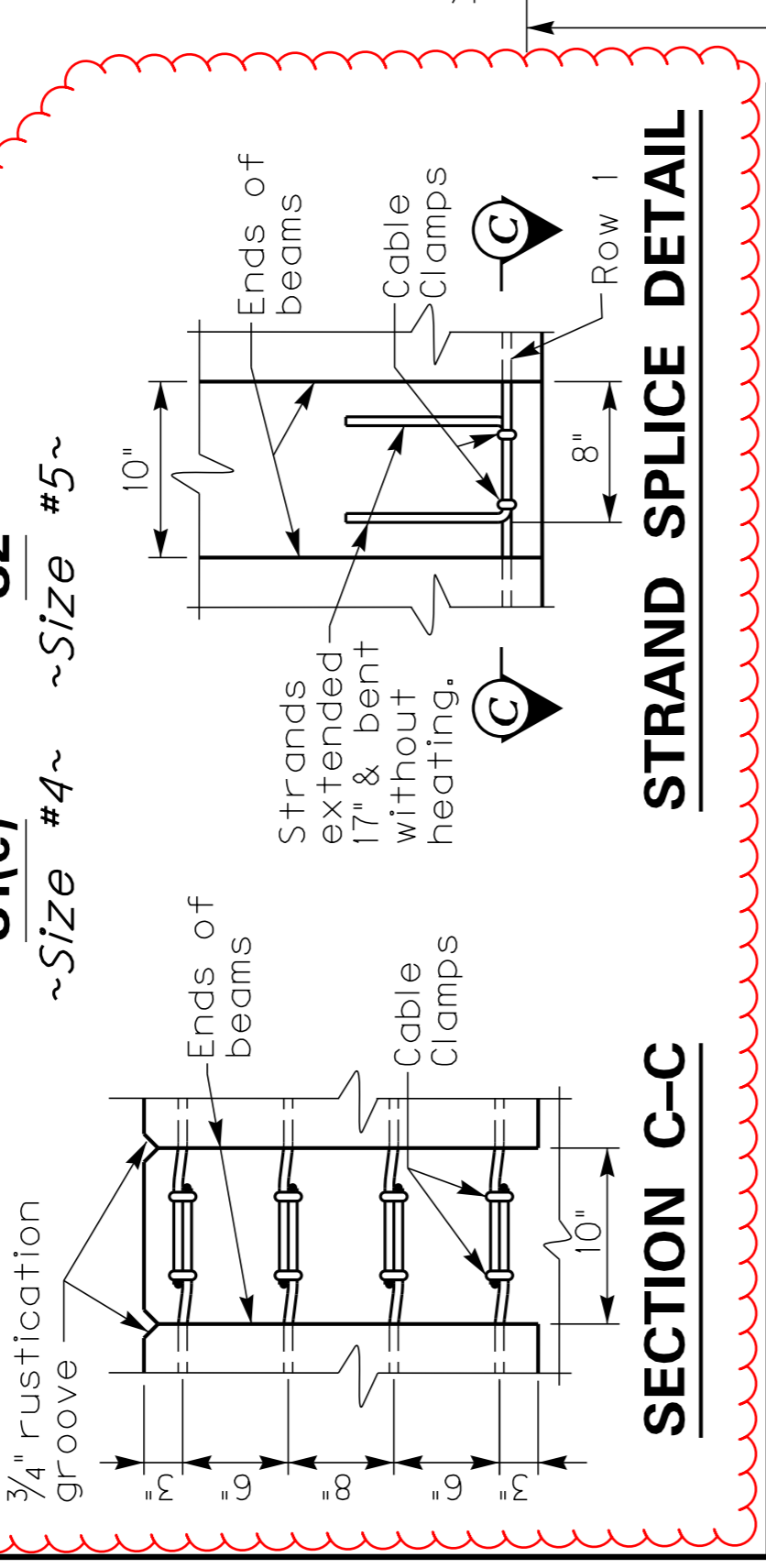
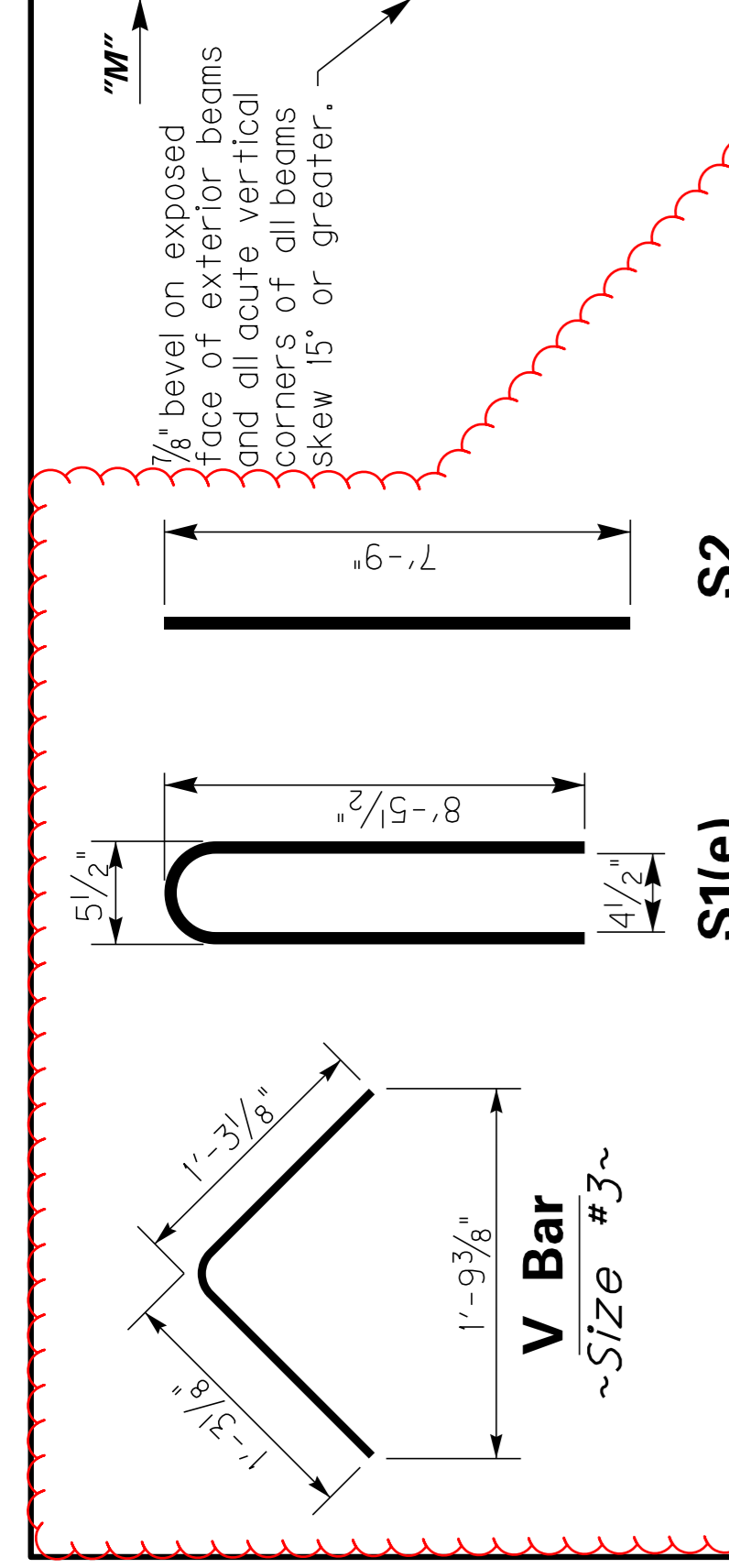
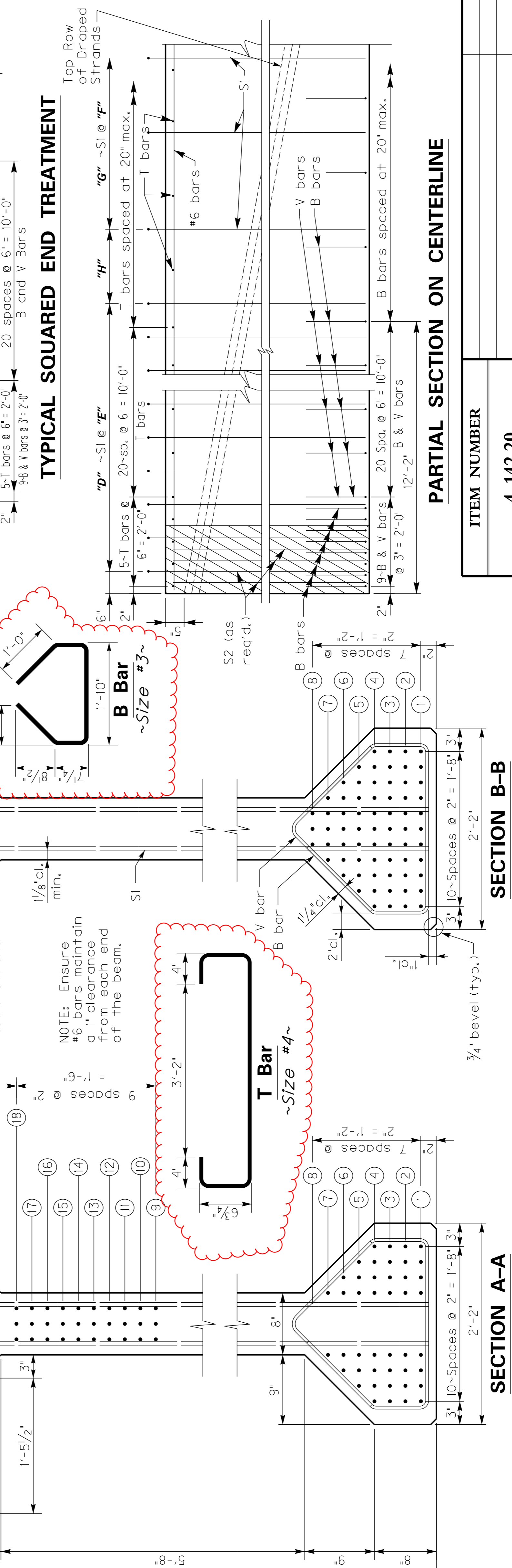
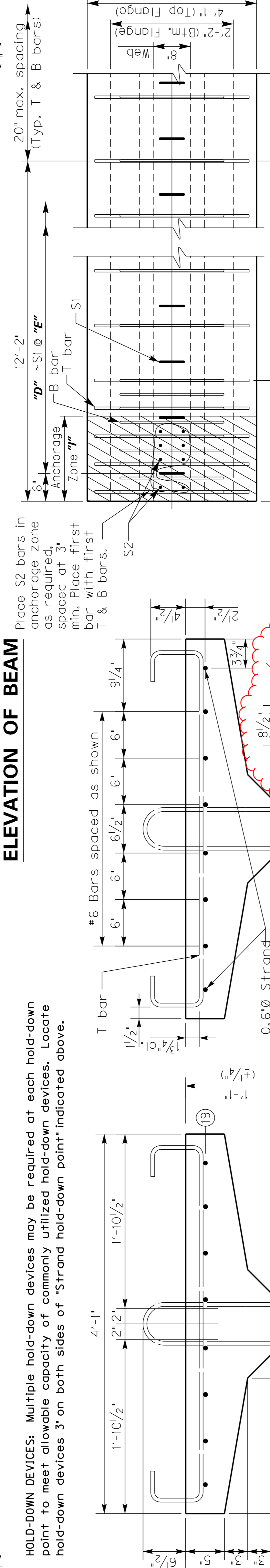
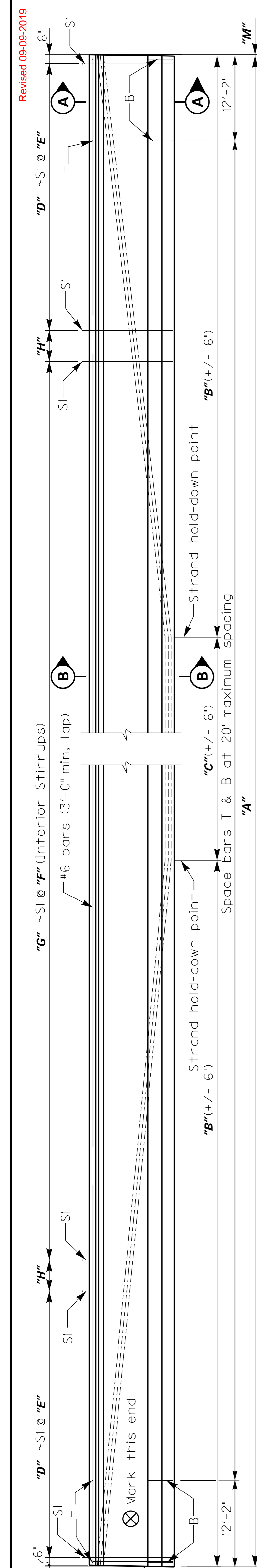
DATE:	Feb. 2018
ROUTE	Stone Quarry Creek
CROSSING	
STATE	PPC I-BEAM, BT96-49 DETAILS
COUNTY	TAYLOR
PROJECT	Department of Highways

STATE	Commonwealth of Kentucky
PROJECT	Department of Highways
ROUTE	Stone Quarry Creek
CROSSING	
STATE	PPC I-BEAM, BT96-49 DETAILS
COUNTY	TAYLOR
PROJECT	Department of Highways

DATE:	Feb. 2018
ROUTE	Stone Quarry Creek
CROSSING	
STATE	PPC I-BEAM, BT96-49 DETAILS
COUNTY	TAYLOR
PROJECT	Department of Highways

DATE:	Feb. 2018
ROUTE	Stone Quarry Creek
CROSSING	
STATE	PPC I-BEAM, BT96-49 DETAILS
COUNTY	TAYLOR
PROJECT	Department of Highways

DATE:	Feb. 2018
ROUTE	Stone Quarry Creek
CROSSING	
STATE	PPC I-BEAM, BT96-49 DETAILS
COUNTY	TAYLOR
PROJECT	Department of Highways



**PCI Beam General Notes**

CONCRETE: Ensure prestressed girder concrete is in accordance with these plans and the specifications.

MATERIALS DESIGN SPECIFICATIONS: For prestressed beams: FY = 60,000 psi F'S = 270,000 psi

PRESTRESSING REINFORCEMENT: Ensure that strands are 0.6" (nom. diameter, 0.217 sq. in.), uncoated seven-wire stress relieved, low-relaxation conforming to AASHTO M 203, Grade 270. Billing of the cost for redesign of beam and subsequent plan modifications will be made for any request of alternate strand type or arrangement. The designer of the original plans is responsible for the billing and work.

CONSTRUCTION METHOD: Pretension all beams. Ensure concrete has attained f'ci (shown in the table) in standard test cylinders that are made and cured identically with the beams without bond stresses being transferred to the concrete or releasing the end anchors. Attain f'c (shown in the table) at or prior to 28 days. Apply an initial force of 43,943 lbs. per low-relaxation strand to develop a stress of 202,500 psi. No beam will be accepted that is honeycombed to the extent that strength of the beam or resistance to deterioration has been affected. An allowance of 0.0005L is made for shortening of beams due to shrinkage and elastic change. Show a detensioning plan by sequential numbering of the strand pattern on the shop plans.

LIFTING DEVICES: Detail lifting devices on the shop plans. Loads are to be distributed equally to each device.

BEARING DEVICES: Include the price for lead plates and/or bearing pads in the bid for precast beams.

FABRICATION: The 'Maximum Allowable Camber' shown on the beam sheet is the amount of camber, measured prior to casting the deck, above which the beam will begin to encroach into the slab. If the measured camber is greater than the 'Maximum Allowable Camber', the contractor will be responsible for any necessary adjustments to assure a minimum slab thickness as shown in the plans. This work will be considered incidental to the completion of the structure and must have the approval of the Engineer.

Mark	Strand Data with number indicated in rows																			Beam Data (measured along centerline)											ITEM NUMBER	4-142.20									
	End (SECTION A-A)																			Approximate Weight													Maximum Allowable Camber								
	Midspan (SECTION B-B)	(1)	(2)	(3)	(4)	(5)	(6)	(7)	(8)	(9)	(10)	(11)	(12)	(13)	(14)	(15)	(16)	(17)	(18)	(19)	A	B	C	D	E	F	G	H	I	M				200535	200920	201305	201691	198982	199368	199753	200139
B1	11	11	11	5																150'-8 5/8"	70'-4 3/8"	10'	21	9"	12"	119	10 3/8"	24"	3 5/8"												
B2	11	11	11	5																151'-0 1/8"	70'-6"	10'	21	9"	12"	120	6"	24"	3 5/8"												
B3	11	11	11	5																151'-3 3/8"	70'-7 3/4"	10'	21	9"	12"	120	7 3/4"	24"	3 5/8"												
B4	11	11	11	5																151'-7"	70'-9 1/2"	10'	21	9"	12"	120	9 1/2"	24"	3 5/8"												
B5	11	9	9	5																149'-6 5/8"	69'-9 5/8"	10'	21	9"	12"	118	9 5/8"	24"	3 5/8"												
B6	11	9	9	5																149'-10 1/8"	69'-11"	10'	21	9"	12"	118	11"	24"	3 5/8"												
B7	11	9	9	5																150'-1 5/8"	70'-0 3/4"	10'	21	9"	12"	119	6 3/4"	24"	3 5/8"												
B8	11	9	9	5																150'-5"	70'-2 1/2"	10'	21	9"	12"	119	8 1/2"	24"	3 5/8"												
B9	11	6	3	3																130'-8"	60'-4"	10'	18	9"	12"	104	7"	24"	2 7/8"												
B10	11	6	3	3																130'-11"	60'-5 1/2"	10'	18	9"	12"	104	8 1/2"	24"	2 7/8"												
B11	11	6	3	3																131'-2"	60'-7"	10'	18	9"	12"	104	10"	24"	2 7/8"												
B12	11	6	3	3																131'-5"	60'-8 1/2"	10'	18	9"	12"	104	11 1/2"	24"	2 7/8"												